

# Gladys Elphick Park / Narnungga (Park 25)

Main Oval Lighting Options





## Acknowledgement of **Country**

We acknowledge this land that we meet on today is the traditional lands for the **Kurna** (pronounced 'Gar-na') people and that we respect their spiritual relationship with their country.

We also acknowledge the Kurna people as the custodians of the Adelaide region and that their cultural and heritage beliefs are still as important to the living Kurna people today.

We also pay respects to the cultural authority of Aboriginal people visiting from other areas of South Australia/Australia.





- Located in Gladys Elphick Park / Narnungga in the City of Adelaide Park Lands, the venue comprises four ovals, practice nets, gender inclusive changerooms and pavilion space.
- The Oval is utilised as a training facility for the South Australian cricket squads (including the Deaf and Vision Impaired squads) and is the home ground of the South Australian Women's Cricket team and Old Ignatians Football Club.
- Additionally, Gladys Elphick Park / Narnungga hosts regular sporting activities such as school holiday clinics, football training and Aboriginal and multicultural cricket and football carnivals.













# Karen Rolton Oval Lighting Upgrade

- The past decade has seen increased opportunities, investment, coverage and support for female cricketers in Australia. This has driven a surge in the number of women's cricket teams and female participation at community and State levels.
- Karen Rolton Oval is the home of women's cricket in South Australia.
- The current 750 lux lights at Karen Rolton Oval were the maximum lux level achievable within site-specific constraints at the time of installation.
- To facilitate the ongoing needs of cricket under lights with a focus on women's cricket, an upgrade to 1500 lux lighting is required.
- Two lighting upgrade options have been explored –  
Option 1) The replacement of the existing four towers with four taller, higher lux towers.  
Option 2) The addition of two towers resulting in a total of six towers.
- Under Option 1, ideally the existing 750 lux lights at Karen Rolton Oval could be moved to Oval 2 at Park 25 in order to facilitate more community use at night.

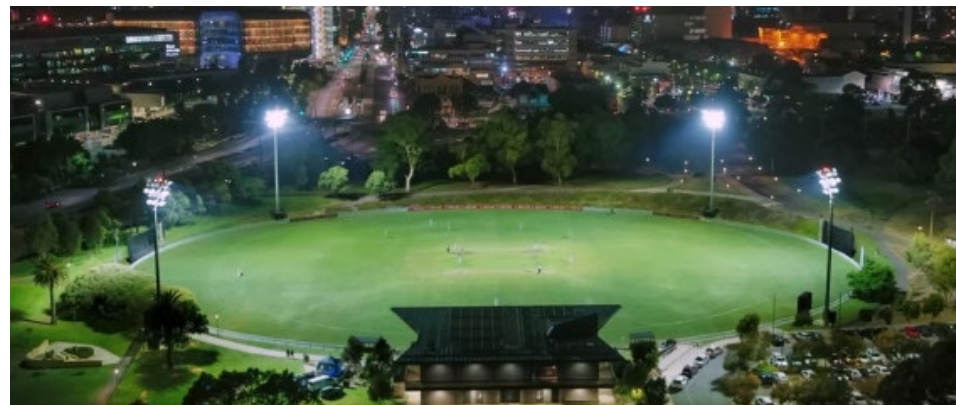


# Why does Karen Rolton Oval / Gladys Elphick Park require a lighting upgrade?

To facilitate the increase in women's cricket participation, we need to extend the usage hours of existing pitches. Illuminated venues enable greater programming flexibility as well as the ability to play more cricket at existing sites.

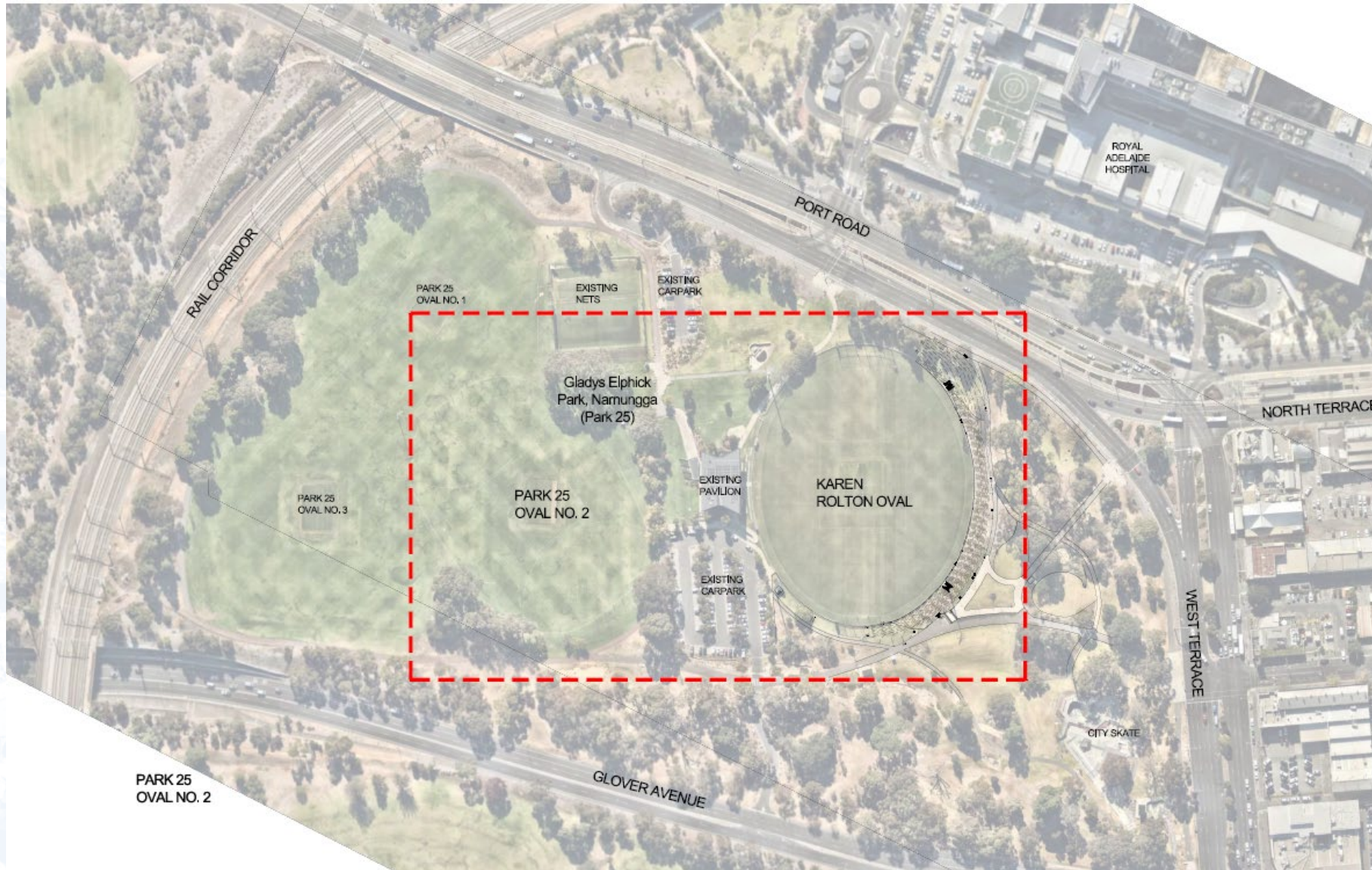
Both the lighting design and level of lux provided need to ensure a safe and suitable environment for players, coaches and officials.

750 lux lighting was installed at Gladys Elphick Park in 2020. In 2021, Standards Australia released a new AS2560.2 Australian standard for domestic cricket lighting, creating the need for an increase in lux levels to 1500 lux to meet these standards.





# Karen Rolton Oval (Oval Number 1) / Oval Number 2





## Why not increase the lux levels of the existing towers?

Unfortunately, the existing towers are unable to support the additional lights (weight) or power load (existing conduit), therefore SACA is unable to upgrade the existing 30 metre towers to meet the 1500 lux.

## What is proposed to happen to the existing lights?

Option 1 would mean completely replacing the four current 30m towers with four new 40m towers.

Option 2 would involve adding two additional towers to the existing four 30m towers so the existing towers would remain.

Current lights on Oval 2 at Park 25 are approximately 50 lux and therefore too low level to allow for any cricket to be played at night, nor any football matches. Ideally, the existing lights on Karen Rolton Oval could be moved to Oval 2 to facilitate more safe community usage at night.





# Option 1) 4 x 40m light towers





## Option 2) 6 x 30m light towers





# Option 1) 4 x 40m light towers



## LIGHTING OPTION

○ 4 NO. NEW 40M TOWERS WITH 70 LIGHTS





# Option 1) Proposed New Lighting / Lighting Relocation



## LIGHTING

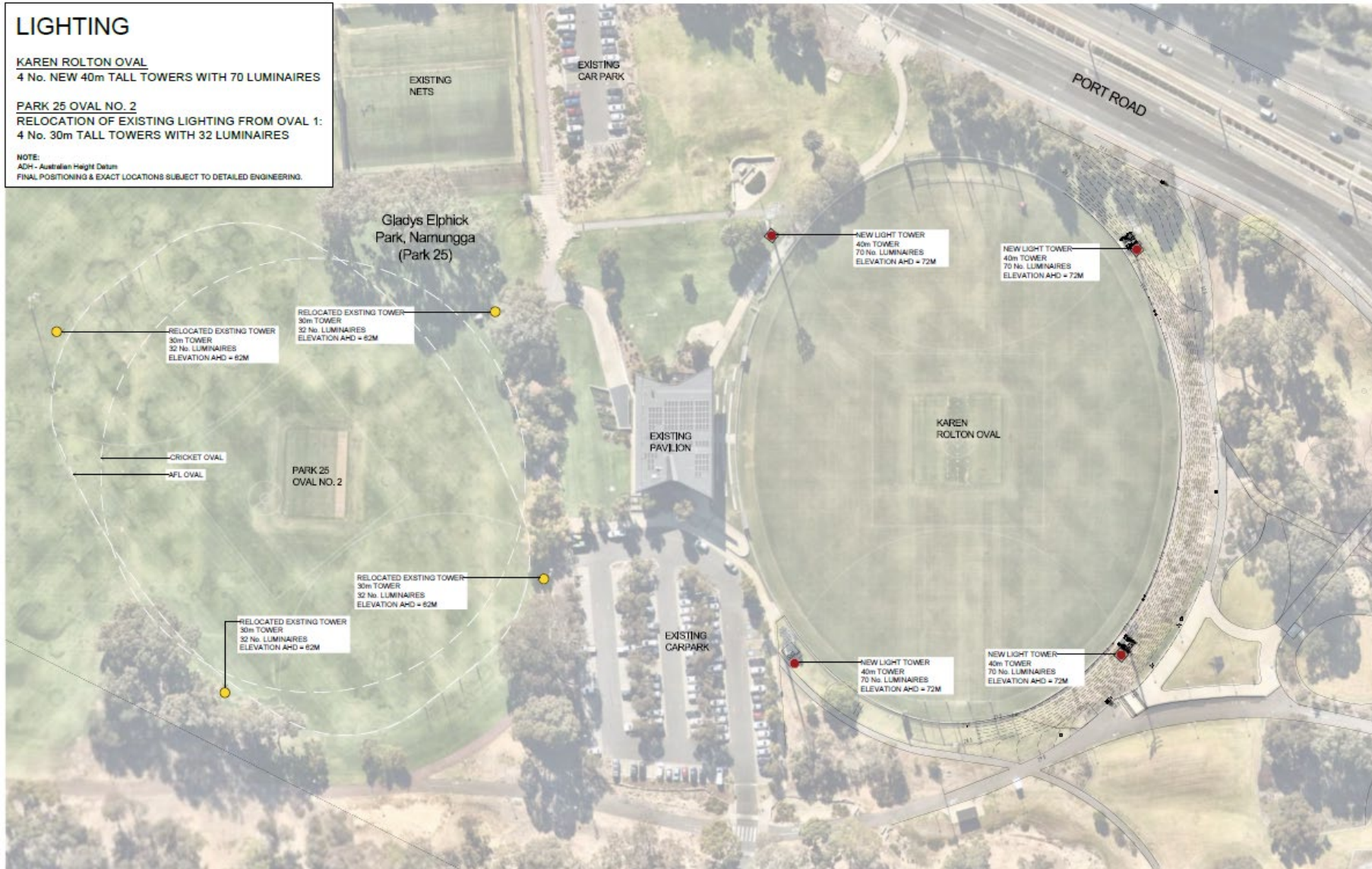
### KAREN ROLTON OVAL

4 No. NEW 40m TALL TOWERS WITH 70 LUMINAIRES

### PARK 25 OVAL NO. 2

RELOCATION OF EXISTING LIGHTING FROM OVAL 1:  
4 No. 30m TALL TOWERS WITH 32 LUMINAIRES

NOTE:  
ADH - Australian Height Datum  
FINAL POSITIONING & EXACT LOCATIONS SUBJECT TO DETAILED ENGINEERING.





# Lighting Options Investigated



- Two options were explored with the purpose of upgrading lighting at Gladys Elphick Park

## Option 1:

- Remove the existing 30m light towers and replace with four new 40m light towers; no trees affected
- This option requires electrical upgrades including a new transformer
- Light provided by this option is far superior to that from the six-pole option
- Increasing the height of the towers from 30m to 40m required consultation with SA Health engineers, the medSTAR retrieval service and the Attorney General's Department. SA Health has advised that there would be no adverse affects should the towers be at a 40m height
- Further to Option 2, light towers currently on Oval 1 are proposed to be relocated to Oval 2
- - Current Oval 2 lights are of little to no use, being at end of life and extremely low lux levels, to be removed

## Option 2:

- Retain the four existing 30m light towers and add an additional two towers, minor impact on trees
- This option requires electrical upgrades including a new transformer
- Light from the six towers will not be ideal for night cricket and will not be to the same standard as option 1
- Lighting experts and SACA prefer Option 1 which provides superior lighting for night cricket, less footprint and provides the opportunity to upgrade Oval 2 lighting, further benefitting community use of a second oval at night.



# Implications of Not Upgrading the Lights

- Lighting at cricket grounds across Australia are being upgraded to meet the new AS 2560.2:2021 Australian standard for domestic cricket lighting.
- If the lights at Gladys Elphick Park / Narnungga fall short of the new Australian Standards, in time, night cricket on the site is less likely to be scheduled, thus reducing content and usage of the oval for women's high-level cricket.
- With reduced high-level content bringing spectators to the Park Lands, there will be less foot traffic in activating the City's West End before and after these cricket events, as well as less light available for surrounding passive users.



# Option 1

**What will the four new 40m light towers, relocation of existing light towers to Park 25 (Oval 2) and eastern mound landscaping cost?**

- The approximate cost to design and install four new light towers at 40 metres in height (276 LED luminaries) is \$5.2 million.
- The cost to move the existing 30 metre towers to Oval 2 is approximately \$1 million.
- The Eastern Mound Landscape development which was approved by Council in 2022 is estimated at \$2 million.
- The total project cost is estimated to be \$8.2 million.
- SACA are looking to form a three-way funding partnership between SACA and the State and Federal Governments to fund this project.





## Option 2

### What will two additional 30m light towers and the eastern mound landscaping cost?

- The approximate cost to design and install four new light towers at 40 metres in height (276 LED luminaries) is \$5.2 million.
- The cost of the eastern mound landscaping project is approximately \$2M.
- The total project cost is estimated to be \$4.6 million.
- SACA are looking to form a three-way funding partnership between SACA and the State and Federal Governments to fund this project.





# SA Health Consultation

- Drawings and specifications of 4 x 40 metre light towers (Option 1) and adding 2 x 30 metre light towers (Option 2) were provided to the engineers working in the Corporate & Infrastructure Division within the Department for Health & Wellbeing
- Department of Health & Wellbeing engineers and the medSTAR emergency retrieval service have advised that either option presented will not adversely affect helicopter operations at the Royal Adelaide Hospital
- The engineers stipulated the need for 24-hour red obstacle lights to be fitted to the top of the light towers for daylight in poor visibility conditions and at night when the lights are not in use







# Benefits to Adelaide City Park Lands

- **Enhanced Safety and Security:** The illuminated ovals in use at night will increase visibility and passive surveillance, helping to deter anti-social behaviour and vandalism as well as providing a sense of security for other park users. Lights will also reduce accidents for night users.
- **Community Engagement:** Well-lit ovals in use at night will encourage more people to gather, socialise, and participate in recreational activities, fostering a sense of community among users.
- **Family-Friendly Environment:** Families will be able to enjoy the surrounding space in the evening, promoting outdoor activities and healthy lifestyles for children and adults alike.
- **Active Lifestyle Promotion:** Evening lighting will encourage walking, jogging, and other activities after dark, promoting physical health within the community.
- **Social Cohesion:** Regular evening / after-work use of the ovals can strengthen bonds between nearby residents and create opportunities for new friendships.
- **Improved Accessibility:** The illuminated Ovals will make Park 25 more accessible for people with varied schedules, including those who work during the day but can still engage in outdoor activities during the evening or at night.
- **Improved Aesthetic:** A well-lit area in use will enhance the visual appeal of Park 25 at night, making the park more attractive for evening strolls, improving the overall quality of the space.



## Benefits to Adelaide City

- **Increased Foot Traffic:** The ovals in use at night will attract visitors to the Hindley Street precinct, thus benefitting nearby restaurants and businesses through increased patronage. This will help to showcase Council's \$15 million Hindley Street upgrades and links to the West End.
- **Economic Boost:** Local restaurants will benefit from extended hours and increased sales as spectators and participants dine out before or after visiting/using the ovals.
- **Attracting Tourism & Events:** The well-lit Ovals could serve as venues for community and cultural events, drawing tourists and visitors to the City, enhancing the City's appeal.
- **Enhanced Urban Aesthetics:** A well-lit Park 25 in use will be an attractive feature of the western end of the City, highlighting natural beauty, architectural features and green space, improving the overall aesthetic appeal of the West end of the City.
- **Increased property values:** Research shows that proximity to well-maintained and well-lit public spaces can increase the desirability and value of nearby residences.





# Who will benefit from a lighting upgrade to Park 25?

- Adelaide City Parklands
- Adelaide City Council
- South Australian Cricket Community
- Old Ignatians Football Club, including two new female teams
- Local residents
- After-hours Park 25 users
- Local restaurants & businesses
- Visitors & spectators of night events
- Community users from a variety of sporting codes
- Walking & cycling path users

There will be no negative impact on current users / sub-lessees should Option 1 go ahead

# Gladys Elphick Park / Narnungga (Park 25) – Eastern Mound Redevelopment



- Following Kadaltilla approval on July 28th 2022, on August 9th 2022, Council approved terracing of the eastern embankment adjacent to the main oval (originally planned as part of Council's Gladys Elphick Park upgrades) with the aim to provide a safer, terraced landscape with more accessible spectator and viewing areas.
- The oval has experienced significant growing usage in recent years and will continue to be considered an exciting venue to host cricket, football and other community sporting events, attracting spectators.
- The need for this project had been identified for some time, with a view to providing additional seating and a more inviting environment for spectators and fans. This followed feedback received whilst hosting both community cricket and high-level events at the oval.
- As part of the Concept Plan approval, the City of Adelaide also drafted a Maintenance Agreement which sets out SACA's obligations for the Eastern Mound Redevelopment with respect to the construction and ongoing maintenance of the area for the remainder of tenure.
- As a result of Council's approval process, changes made to the original concept plans based on feedback from Kadaltilla and Council included a reduction in concrete terraces, a lighter and cooler path surface, DDA viewing areas, an additional shade structure and requirements to maintain public access and use of the improved area.



# Existing Site





# Concept Plans



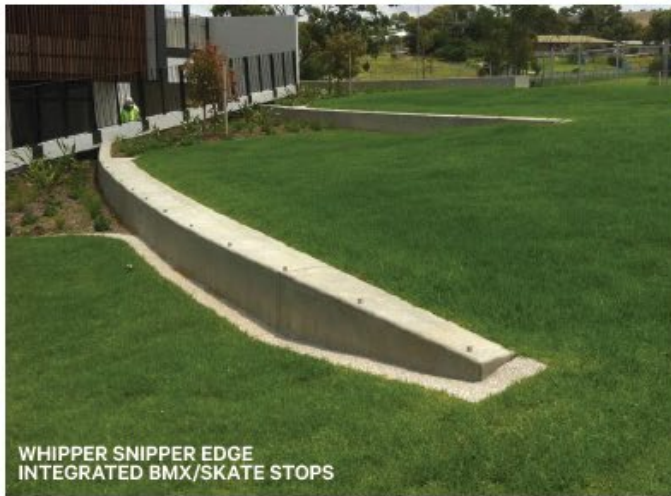
EXISTING CONCRETE SEATING



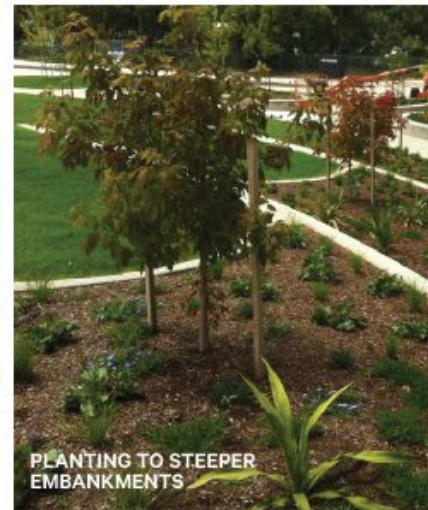
CONCRETE TERRACES + LAWN



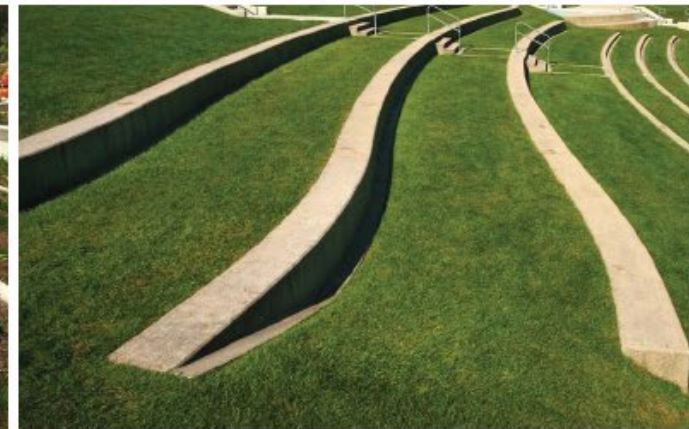
INTERMEDIATE STEPS



WHIPPER SNIPPER EDGE INTEGRATED BMX/SKATE STOPS



PLANTING TO STEEPER EMBANKMENTS



EXPOSED AGGREGATE SURFACE TREATMENT



# Existing Eastern Mound Site View





# Proposed Eastern Mound Site View







# Consultation

- To date, high-level feasibility consultation has taken place with:
  - Cricket Australia
  - SA Health
  - Adelaide Airport
  - SA Health Engineers
  - Independent Lighting Consultants
- In late 2021, SACA staff met with the Kurna Yerta Aboriginal Corporation (KYAC) regarding the Eastern Mound Redevelopment and received information pertaining to the cultural history of the site, appropriate engagement of suitable Kurna representatives going forward (should the project proceed), and positive feedback from KYAC.
- Should the Gladys Elphick lighting upgrade be approved by APLA and Council, further engagement with the Kurna Yerta Aboriginal Corporation will take place regarding the lights, as well as incorporating cultural and interpretation artwork into the detail design of the mound redevelopment. This will contribute to the ongoing journey of reconciliation and building collaborative and trusting relationships to strengthen ties with a range of cricket codes and broader South Australian community.



# Links to Council's Long-Term Aspirations

The Gladys Elphick Park lighting project aligns with all four of Council's long-term aspirations:

## 1) Our Community – Vibrant, connected and inclusive

An upgraded oval with lights compliant with Australian standards, and more exciting spectator viewing options, will attract more visitors to the City, attract more events to the Park Lands and will provide a world-class amenity.

## 2) Our Economy – Growing, innovative and responsive

More evening activation of Gladys Elphick Park will mean more visitors in the surrounding precinct. This will assist in growing the local economy.

## 3) Our Environment – Resilient, protected and sustainable

SACA is driving sustainability initiatives, currently diverting all waste from landfill with a new waste system at the pavilion and when events are held, and is investigating initiatives to transition grounds machinery from fuel to electric, reducing carbon emissions, aspiring to be a nation-leading green venue

## 4) Our Places – Interesting, purposeful and safe

An improved Gladys Elphick Park will add to the accessibility and uniqueness of the local precinct. Both the lighting upgrade and the terracing will help to make the space safe and lively.



# Links to Adelaide Park Lands Management Strategy Towards 2036



## Goal 1 – Places and Spaces

- A well-lit Gladys Elphick Park will attract visitors, tourists and spectators to cricket, sporting and cultural events at night, and will provide all-ability access to the grounds and pavilion.
- Having night events and activation at such a high-quality venue will set the Adelaide Park Lands apart from other capital cities.
- Promoted and advertised events will assist in making the Park Lands a visitor and tourist destination.
- Park 25 is very much a sports and recreation destination, therefore increased lighting to the ovals will only further enhance this usage and support longer hours of space activation.
- Under lights, Gladys Elphick Park will be able to accommodate more night events of all types and sizes including world-class sporting events at night.
- The lights would allow for high-level competitions to be played as well as community-level use and would assist in attracting regional events given the lights would extend hours of usage.
- The safety and security benefits of a well-lit Gladys Elphick Park would attract city visitors and local residents at night for passive recreation purposes.

# Links to Adelaide Park Lands Management Strategy Towards 2036



## Goal 2 – Connections and Networks

- Illuminated ovals in use in Gladys Elphick Park will improve the safety of the walking and cycling trails in the Park.
- Park 25 is identifiable for its sports and recreation facilities and the addition of Class I Standard lights (AS2560) on Oval 1 plus higher-level lights (Class III) on Oval 2 will further enhance this identifiability.
- Higher-level lights on both ovals will enhance safety and ease of accessibility of Park 25 at night.
- The terracing of the Eastern mound will enhance the walking and cycling path and offer a place to stop and rest along the path.
- The terracing has been designed to complement the landscape character of the Park.
- The illuminated ovals will certainly add to the safety of those moving throughout the park at night, while night oval usage will add to passive surveillance throughout the area.
- SACA have a robust environmental sustainability strategy in place at Gladys Elphick Park, therefore environmental values are at play in all activations at this site.



# Links to Adelaide Park Lands Management Strategy Towards 2036



## Goal 3 – Natural Systems, Cultural Landscapes and Climate Resilience

- In late 2021, SACA staff met with the Kurna Yerta Aboriginal Corporation (KYAC) regarding the Eastern Mound Redevelopment and received information pertaining to cultural history of the site, appropriate engagement of suitable Kurna representatives going forward (should the project proceed), and received positive feedback from KYAC.
- SACA will continue to work with the Kurna Yerta Aboriginal Corporation (KYAC) in order to incorporate Kurna cultural heritage into the final designs.
- Materials and architecture of the pavilion reflect the diversity of the Adelaide Park Lands, as does the design of the Eastern mound terracing.
- The environmental sustainability strategy in place at Karen Rolton Oval / Gladys Elphick Park helps to strengthen the Adelaide Park Lands' role in developing a climate-resilient city.
- Increasing the lighting levels at both Oval 1 and Oval 2, Gladys Elphick Park essentially doubles the availability of the playing fields for sports, essentially providing more playing opportunities for greater participation.



SACA

Thank *you*

*Inspiring and uniting South Australians through cricket*